

Resilient Landscaping: Gardening in the Defensible Space Zone

Tuesday, July 26, 5:30-7:30 pm

Live Presentations via Zoom

Register at: <https://tinyurl.com/4w4bbzf7>

Co-Sponsored by:

Daily Acts

Funded by:

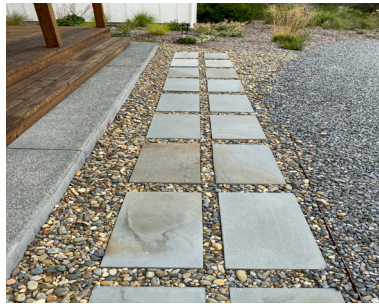
Sonoma County
Vegetation Management Grant Program

Presented by:

The Resilient Landscapes Coalition:

Fire Safe Sonoma, UCCE Master Gardener Program of Sonoma
County, Sonoma Ecology Center, Habitat Corridor Project

All are welcome, however workshop content will be focused on the South Sonoma County communities



Learn how to create and maintain a fire-wise and sustainable landscape that supports biodiversity and meets County code requirements. We can help you with plant selection, placement, and maintenance to preserve and enhance wildlife habitat, while keeping your property and neighborhood fire-wise and sustainable.

This two-hour workshop will allow plenty of time for questions, and will provide:

- Recommendations for fire-wise landscaping in the 0-5', 5-30', and 30-100' defensible space zones.
- Practical ways to reconcile the sometimes conflicting guidelines to achieve a beautiful, biodiverse, fire-wise landscape that conserves precious water and energy.
- A practical understanding of what it means to be sustainable in an ever-changing California climate.
- Resources for how to move forward with your landscape and community.

Workshop creators and presenters include:

Mimi Enright: Program Manager, UC Cooperative Extension Master Gardener Program of Sonoma County
April Owens: Executive Director, Habitat Corridor Project; Horticulture Chairperson, CNPS-Milo Baker Chapter
Jon Kanagy: Design and Implementation Project Manager, Sonoma Ecology Center
Ellie Insley: Landscape Architect, Natural Habitat Restoration Specialist; Director, Sonoma Ecology Center

